


## Human MIF Protein, His tag (Animal-Free)

Cat #: PRP1907

Size: 5 µg/20 µg/100 µg/1 mg

### Product Information

	<b>Product Name:</b> Human MIF Protein, His tag (Animal-Free)		
<b>REF</b>	<b>Catalog Number:</b> PRP1907	<b>LOT</b>	<b>Lot Number:</b> Refer to product label
	<b>Purity:</b> > 98 % as determined by SDS-PAGE		
	<b>Storage:</b> Store at -20°C		<b>Preparation method:</b> E.coli
	<b>Shipping:</b> The product is shipped at ambient temperature.		

**Background:** Macrophage migration inhibitory factor (MIF) is an immunomodulatory cytokine, and its role in preventing random immune cell migration was recognized decades ago. Despite its historical name, MIF also has a direct chemokine-like function and promotes cell recruitment. MIF is a universally expressed protein that plays a key role in many inflammatory and autoimmune diseases. More and more evidence shows that MIF also controls the metabolic and inflammatory processes of metabolic pathology related to obesity. Further research shows that MIF plays a particularly key role in cell cycle regulation, so it is also true in tumorigenesis. The important role of MIF in various solid tumors and hematological tumors has been confirmed. MIF plays an important role in the pathogenesis of gastrointestinal, liver and pancreatic diseases.

**Sequence:** Amino acid sequence derived from Human MIF (Pro2-Ala115) (P14174) was expressed with 6×His tag at the C-terminus.

**Protein length:** The recombinant Human MIF Protein consists of 114 amino acids and predicts a molecular mass of 12.5 kDa.

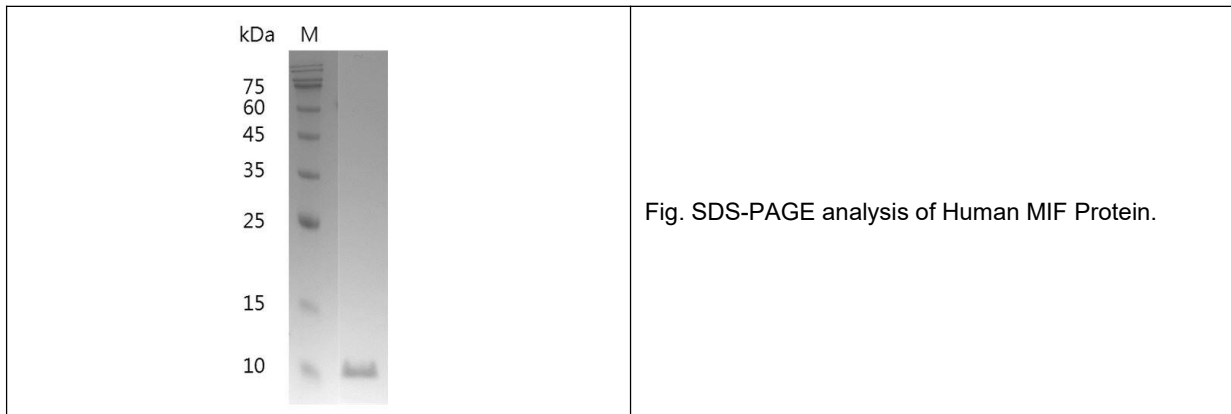
**Biological Activity:** Testing in process.

**Endotoxin:** <0.1 EU per µg of the protein by the LAL method.

**Formulation:** Lyophilized from sterile PBS, pH 8.0.

**Storage Instructions:** Lyophilized protein product should be stored desiccated below -18°C. Upon reconstitution, the protein should be stored at 4°C between 2-7 days and for future use below -18°C. For long term storage it is recommended to add a carrier protein (5% HSA, 10%FBS or 0.1%BSA). Please prevent freeze-thaw cycles.

**Usage notes:** Always centrifuge tubes before opening. It is recommended to reconstitute the lyophilized recombinant protein to a concentration of 0.1-1 mg/mL using the buffer we provided, and keep at room temperature for at least 20 min to fully dissolve. Please avoid vortex vigorously.



**Note:** The product listed herein is for research use only and is not intended for use in human or clinical diagnosis. Suggested applications of our products are not recommendations to use our products in violation of any patent or as a license. We cannot be responsible for patent infringements or other violations that may occur with the use of this product.